

LOGSTOR FlextraPipe[®]

LOGSTOR PexFlextra[®]



LOGSTOR PexFlextra®

FlextraPipe®, PexFlextra® is a complete range of diffusion tight, flexible pre-insulated pipe systems for community- and district heating.

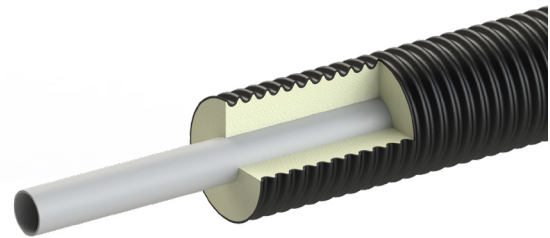
The service pipe in PexFlextra® is made of very flexible polyethylene PEXa, featuring an EVOH membrane that prevents the diffusion of oxygen into the water. The service pipe is enclosed by soft polyurethane foam insulation and protected by a corrugated outer casing with built in EVOH diffusion barrier that will ensure that heat loss property will not deteriorate over

life time. The properties of the materials and long lengths make it easy to install PexFlextra® pipe even in difficult terrain. LOGSTOR PexFlextra®. This is a recommended solution for piping systems with operating temperatures between 80°C and 95°C.

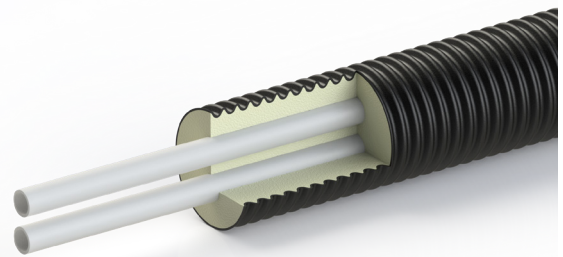
PexFlextra® is available in single and twin configurations, and the system includes all the couplings, joints, fittings and tools needed to establish a complete pre-insulated piping network.

Technical data

Service Pipe	
Material	PEXa with barrier for oxygen (EVOH)
Insulation	
Material	Polyurethane foam (PUR)
Thermal conductivity (50°C)/Lambda	0.022 W/mK
Insulation thickness, Series	Series 1, 2
Outer casing material	
Outer casing material	Polyethylene (PE-HD). Corrugated, flexible surface with built in diffusion barrier (EVOH)
Operating temperature according to EN15632-2	80-95°C
Malfunction temperature	100 °C (maximum 100 hours during 30 years)
Pressure	6 bar
Joining method	Press couplings / compression couplings
Coils, lengths	100 metres. Customised lengths optional



LOGSTOR PexFlextra® single



LOGSTOR PexFlextra® twin

Range of dimensions – service pipe/outer casing (mm)

Single pipe		Twin pipe	
Series 1	Series 2	Series1	Series 2
	20/90		20-20/110
	25/90	25-25/110	25-25/125
	32/90	32-32/110	32-32/125
40/90	40/110	40-40/125	40-40/140
50/110	50/125	50-50/160	50-50/180
63/125	63/140	63-63/180	
75/140	75/160		
90/160	90/180		
110/180			

Other insulation series according to request. Coils are as standard 100 m. Possible to order cut to length delivery.

LOGSTOR PexFlextra® is a complete program with all needed components such as: pipes (single and twin), valves, pre-insulated tees, inlet pipe, pre-insulated bends, protection cap, press couplings, compression couplings, casing joints straight and T, and tools.

The corrugated outer casing and the soft foam insulation together provide a unique degree of flexibility.

For further technical information please go to www.logstor.com.

LOGSTOR Denmark Holding ApS
Danmarksvej 11 | DK-9670 Løgstør

T: +45 99 66 10 00
E: logstor@kingspan.com



For the product offering in other markets please contact your local sales representative or visit www.logstor.com

Care has been taken to ensure that the contents of this publication are accurate, but Kingspan Limited and its subsidiary companies do not accept responsibility for errors or for information that is found to be misleading. Suggestions for, or description of, the end use or application of products or methods of working are for information only and Kingspan Limited and its subsidiaries accept no liability in respect thereof.

To ensure you are viewing the most recent and accurate product information, please scan the QR code directly above.

First Issue | 09/2022

